

A vibrant outdoor market scene on a city street. In the foreground, a fruit stall is overflowing with fresh produce, including mangoes, pineapples, and bananas. A handwritten sign on the stall reads "BEST LARGE Juicy SWEET MANGO". The stall is covered by a green and white striped awning. In the background, other market stalls and people are visible, along with multi-story brick buildings and a clear sky. On the right side of the image, a man with a white beard and a white cap is walking towards the camera, wearing a grey jacket over a white tunic. The overall atmosphere is bustling and multicultural.

Multicultural London English and linguistic innovation

Paul Kerswill, Arfaan Khan and Eivind Torgersen

Queen Mary, University of London
Lancaster University

□ *Linguistic innovators: the English of adolescents in London (2004–7)*

□ *Multicultural London English: the emergence, acquisition and diffusion of a new variety (2007–10)*

Investigators:

Paul Kerswill (Lancaster University)

Jenny Cheshire (Queen Mary, University of London)

Research Associates:

Sue Fox, Arfaan Khan, (Queen Mary, University of London)

Eivind Torgersen (Lancaster University)

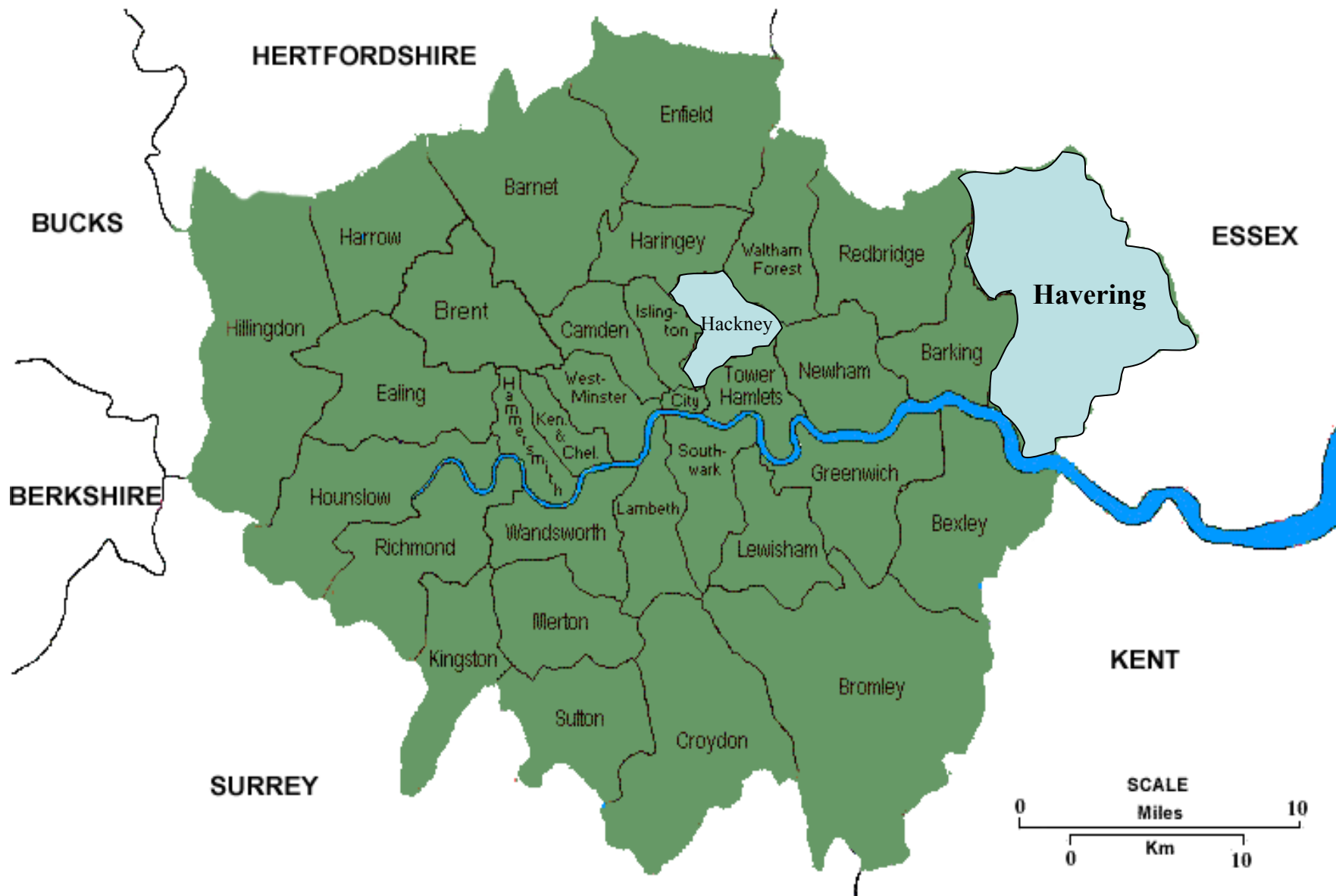
The logo of the Economic and Social Research Council (ESRC) is a dark blue square containing the text 'E · S · R · C' at the top, followed by 'ECONOMIC & SOCIAL RESEARCH COUNCIL' in a serif font, arranged in four lines.

E · S · R · C
ECONOMIC
& SOCIAL
RESEARCH
COUNCIL

Funded by the Economic and Social Research Council

<http://www.lancs.ac.uk/fss/projects/linguistics/innovators/>

<http://www.lancs.ac.uk/fss/projects/linguistics/multicultural/>



Project design: ‘Innovators’ project

- 16 elderly Londoners
- 98 17 year old Londoners
- from inner London (Hackney) and outer London (Havering)
- female, male
- “Anglo” and “non-Anglo”
- Free interviews in pairs
- 1.4m words transcribed orthographically, stored in a database time-aligned at turn level

Contact, innovation, diffusion and levelling in dialectology

(1) Overall patterns:

- **divergence/innovation** in inner London
- non-Anglos and Anglos with non-Anglo networks in the lead in innovation
 - Extreme GOOSE-fronting
 - little FOOT-fronting
 - near-monophthongal qualities for diphthongs
 - higher degree of DH-stopping
 - innovative quotative ‘this is me’
 - lower level of was/were levelling

- some evidence of **diffusion** to south-east periphery
 - reversal of diphthong shift
 - reduction of H-dropping
- but also **levelling** in periphery, without involvement of inner London
 - GOAT-fronting
 - higher level of was/were levelling
- Havering lies between inner London and periphery

(2) Locus of contact in dialectology

- In modern metropolises new **contact varieties** result from language contact following large-scale concentrated immigration
- Transmission of innovations through **social networks** can be demonstrated quantitatively (harder to show in individual cases!)
- Contact varieties have the potential to spearhead language change, given the right social relations and favourable identity factors

Consequences for dialectology

- Sources of innovation must today be sought in minority-ethnic metropolitan varieties

and:

- need to recognise a more complex diffusion and levelling model

Research questions MLE project

- Characterisation of the ‘multiracial vernacular’ of London: is it ethnically neutral?
- Are there differences between areas within London?
- How does it spread?
- Is it changing?
- Is it age-graded?
- Are there effects of home language?

Project design: MLE project

- 112 4, 8, 12, 17 year olds and adults
- North London
- female, male
- “Anglo” and “non-Anglo”
- Free interviews in pairs
- Phonological and grammatical analysis
- Perception tests

Perception tests

- We examine:
 - speaker ethnicity and location
 - salience of individual features (vowel qualities)
- Classification of real speech
 - 10 second sound clip per speaker
 - Classification: speaker's ethnicity, social network type and location
- Vowel quality preferences
 - FOOT, GOOSE, FACE, PRICE
 - Acoustic manipulation of formant frequencies

Who are the speakers?

Megan	Hackney	Anglo	Anglo network
Andrew	Hackney	Anglo	Anglo network
Laura	Hackney	Anglo	Multiethnic network
Ryan	Hackney	Anglo	Multiethnic network
Sulema	Hackney	Non-Anglo	Multiethnic network
Dom	Hackney	Non-Anglo	Multiethnic network
Kelly	Havering	Anglo	Anglo network
Dale	Havering	Anglo	Anglo network
4 other speakers	Birmingham	Anglo and non-Anglo	

Perception test screen

Natural_speech_all_revised

File Query Help

1 / 12

Make your selection: ethnicity and location

Restore Down

WHITE

BIRMINGHAM

BLACK

LONDON

ASIAN

ESSEX

OTHER

MANCHESTER

NEXT

Click here to play the last sound again

start

Transcriber ...

Microsoft Po...

Inbox - Mic...

Praat objects

Praat picture

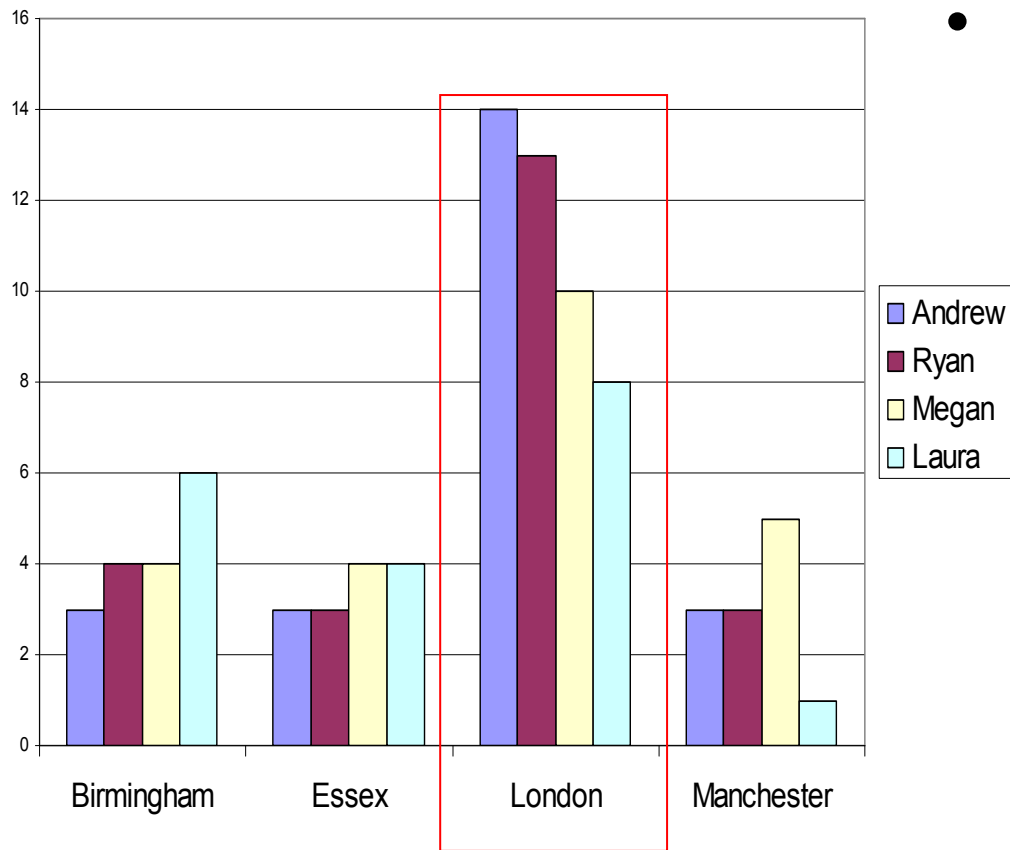
Natural_spe...

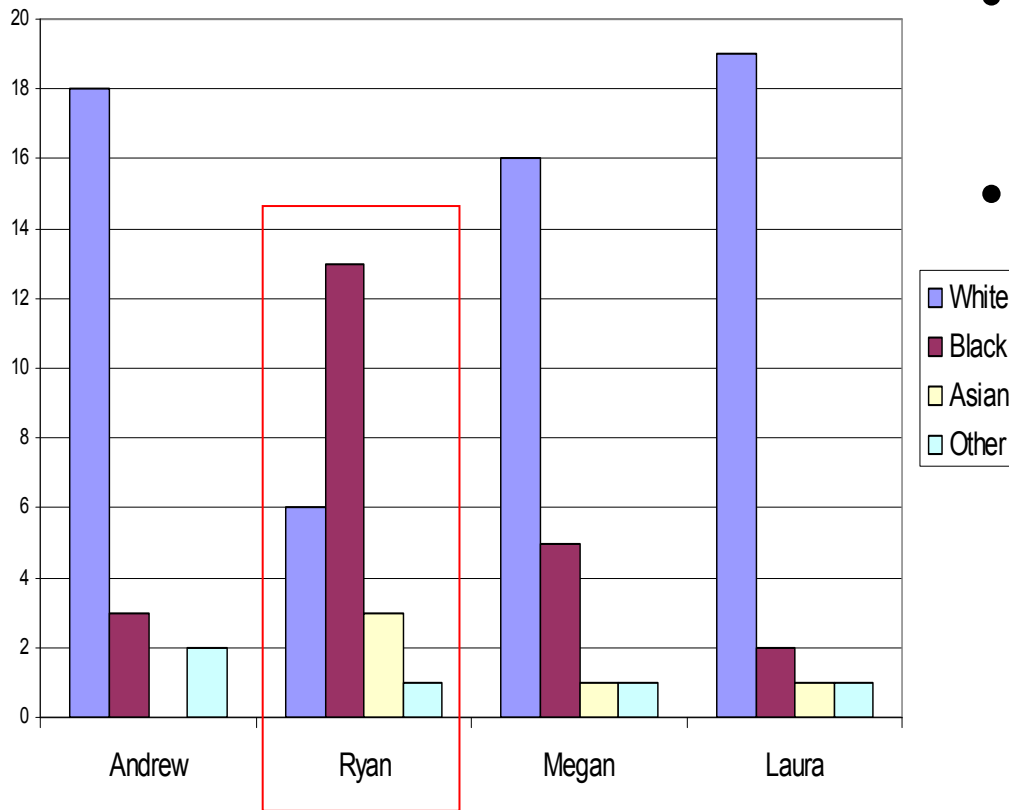
EN

16:56

Hackney Anglo voices

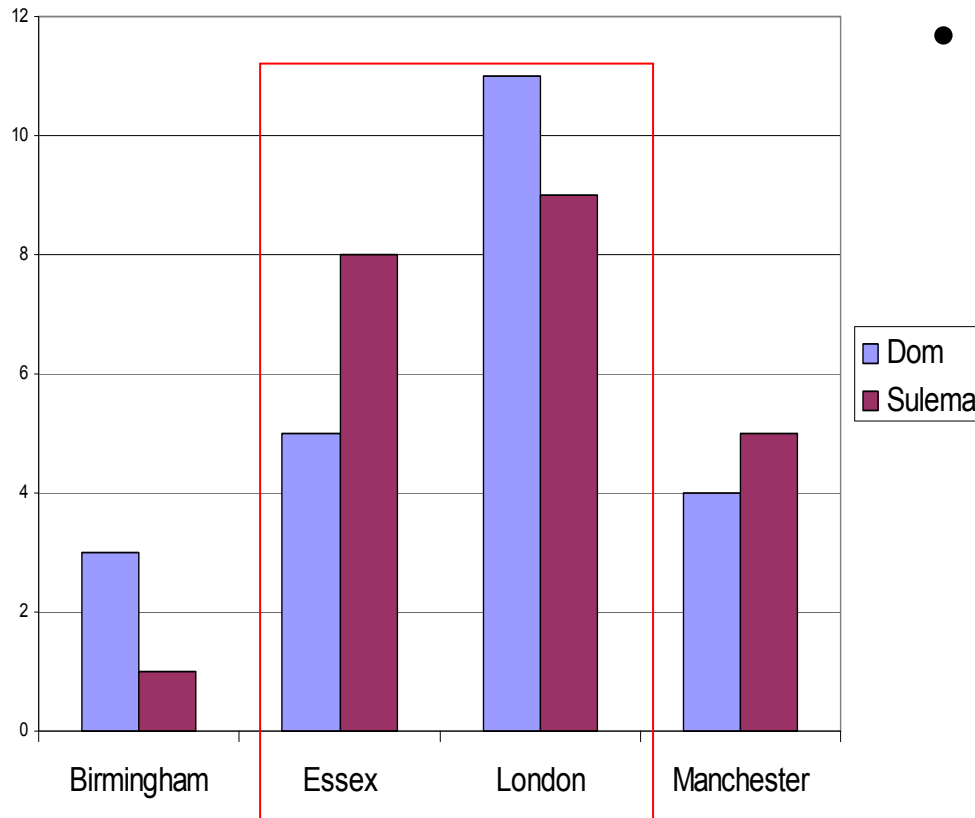
- Heard as coming from London



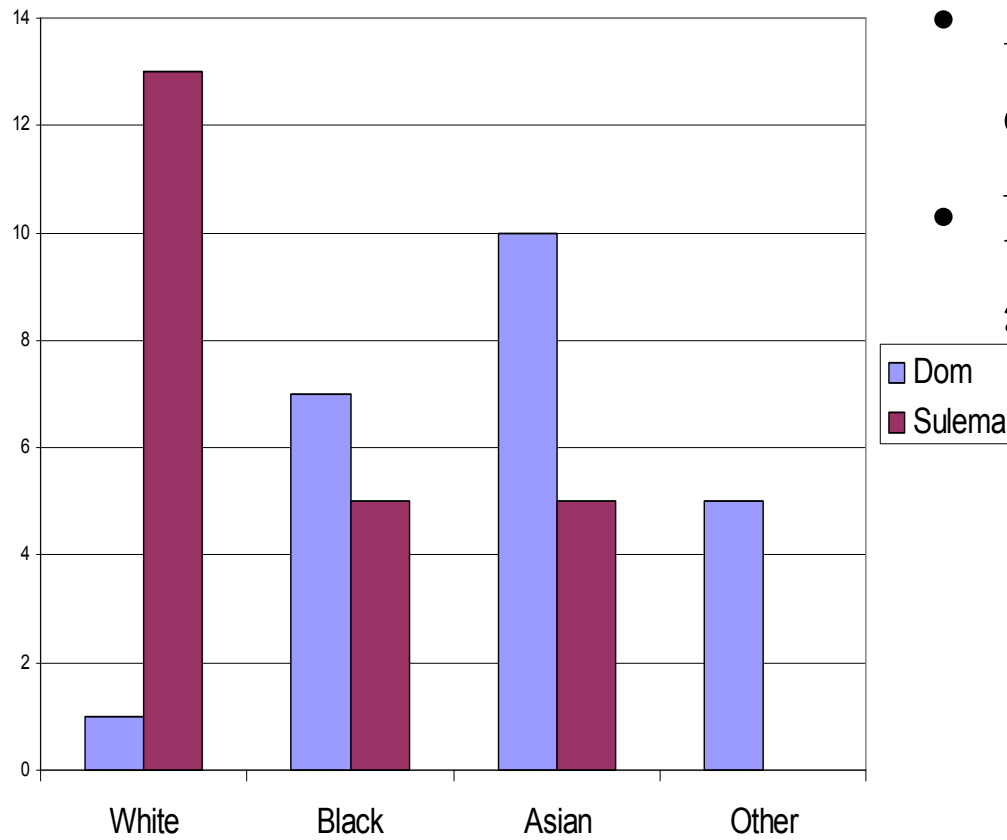


- Heard as ‘white’, but there is some variation
- Ryan, who has a multiethnic friendship network, is heard as ‘black’

Hackney non-Anglo voices



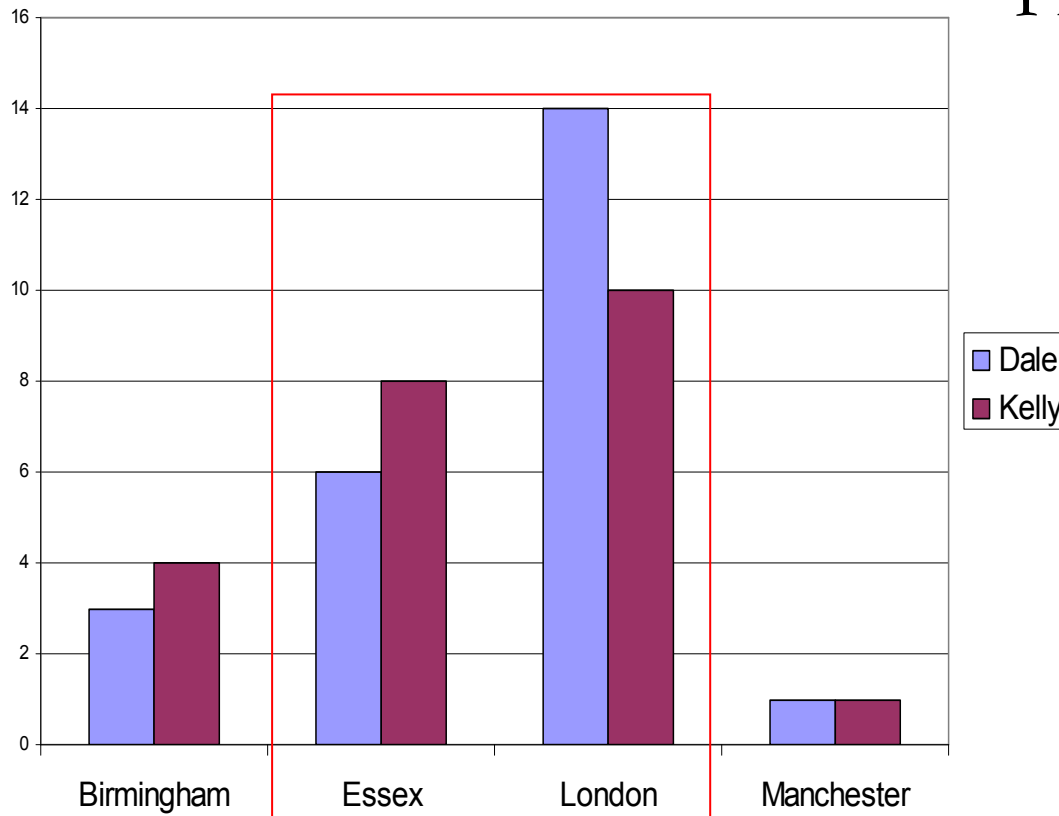
- Classified as London and Essex

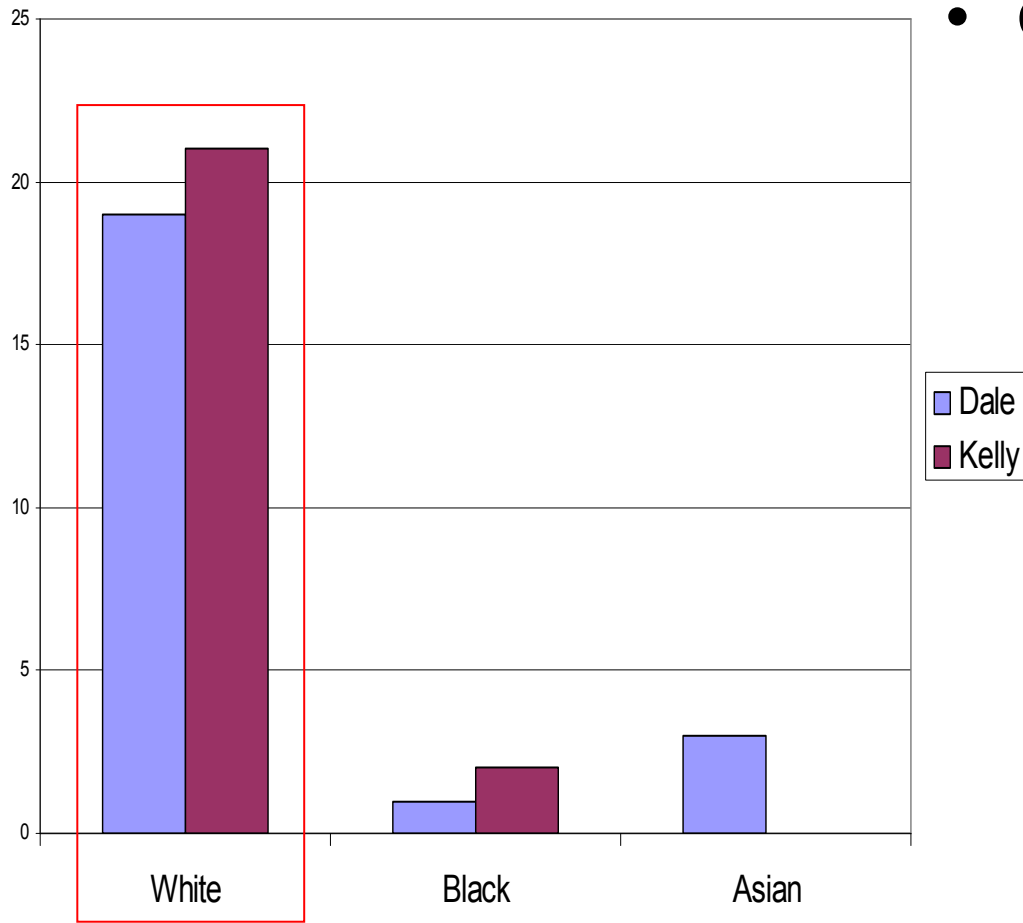


- Ethnicity is more difficult to classify
- But: Dom (Columbian) and Sulema (Moroccan)

Havering Anglo voices

- From London and Essex



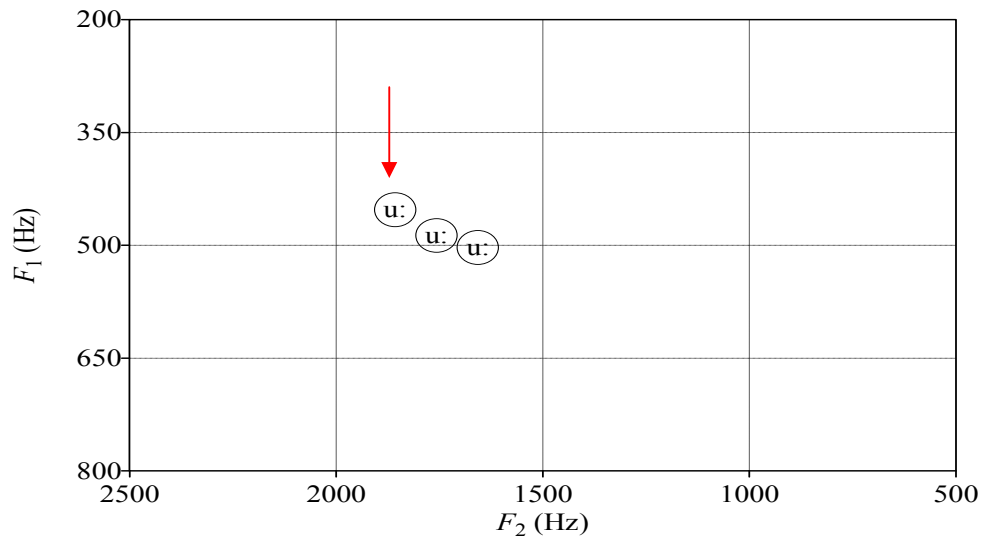


- Clearly heard as 'white'

Perception test results: real speech

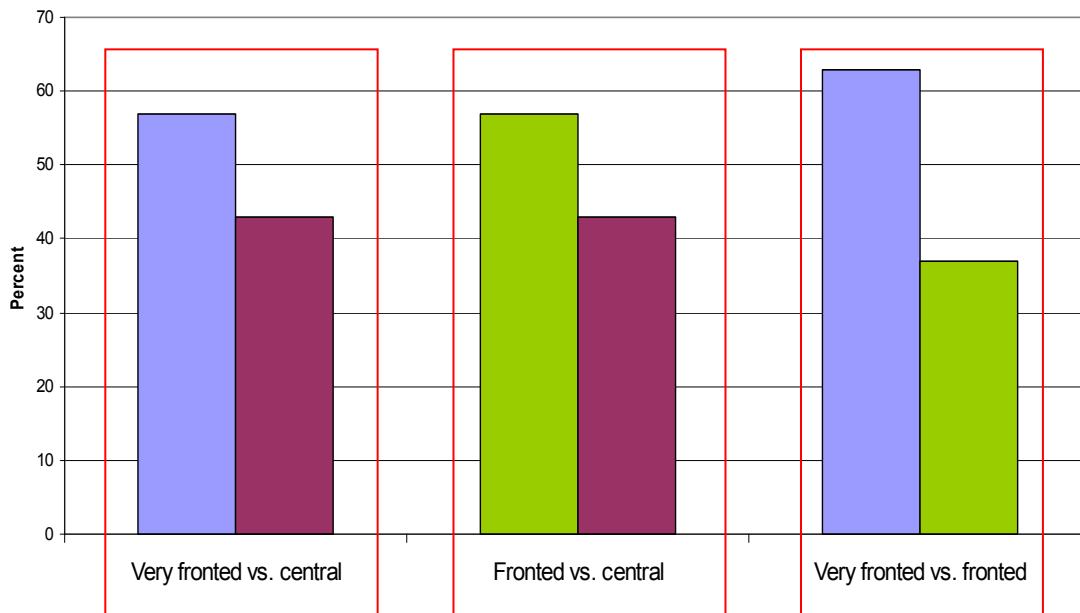
- Listeners can place location fairly well
- Can distinguish between local and non-local voices
- Anglos from Havering are overwhelmingly heard as ‘White’, while those from Hackney are variably judged as ‘Black’
- The speaker’s friendship network has an effect on assigning ethnicity to a voice
- We will add more non-Anglo speakers to examine how well particular ethnicities are detected

Perception test: manipulated vowels



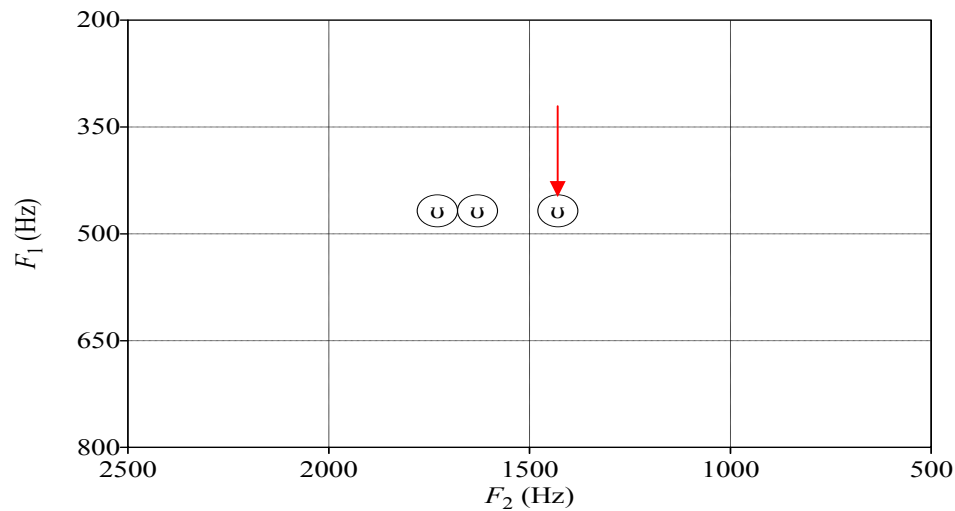
- 'BOOT'

- Very fronted quality is preferred to central quality
- Fronted quality is preferred to central quality

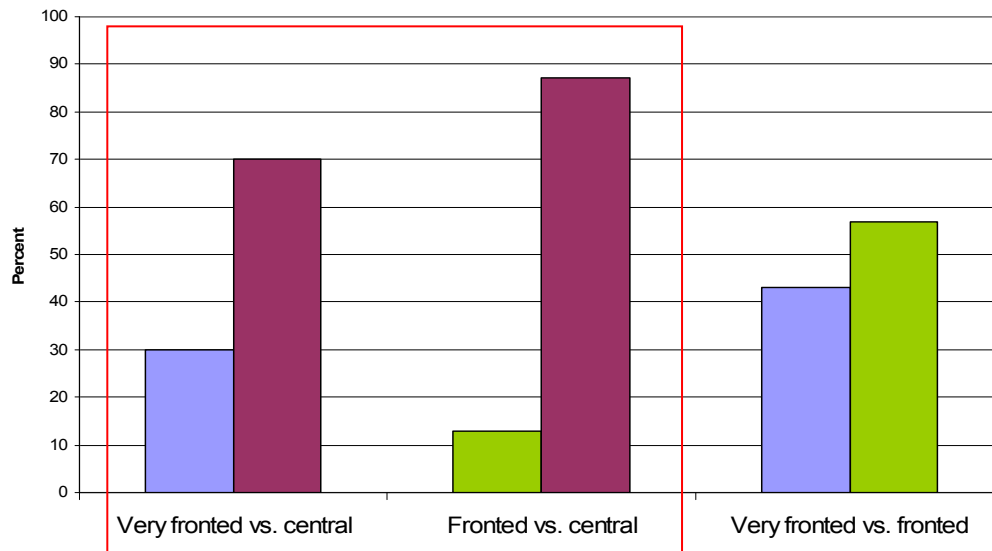


Very fronted quality is preferred to fronted quality

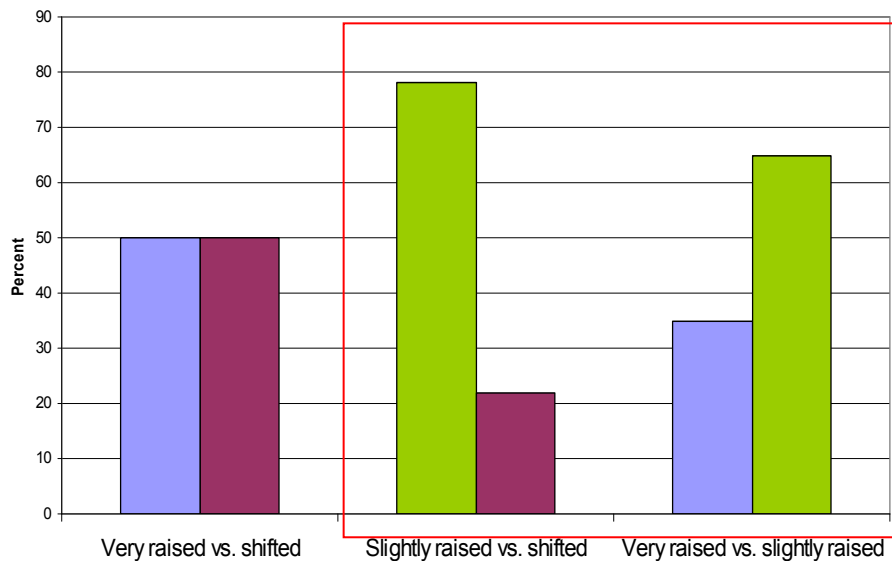
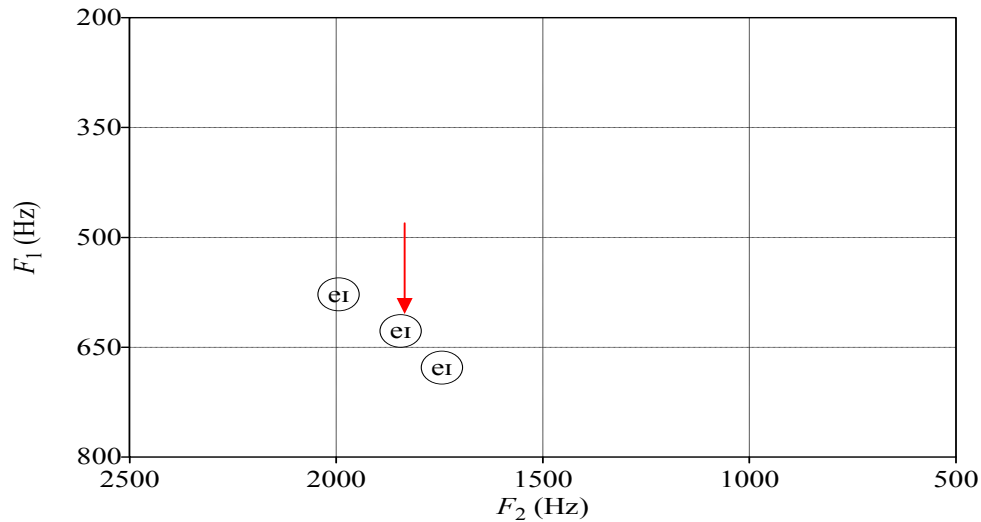
Perception test: manipulated vowels



- 'GOOD'
- The central quality is preferred to both the fronted ones



Perception test: manipulated vowels



- 'CAKE'
- Slightly raised/fronted is preferred to shifted and to very raised/fronted quality
- Very raised/fronted is not preferred to shifted quality

Perception test results: manipulated vowels

- In general listeners prefer vowel qualities that resemble the ones they produce themselves
- Preference is for vowels found to be characteristic of **non-Anglo** speakers
- Fine grained vowel differences are salient

Summary

- Perception test results from North London correspond to production results from Hackney
- MLE features seem to be salient in perception
- Inner London speech is more ethnically neutral than outer London speech
- Data collection is currently underway and we will have production results ready at a later stage