

ResNet

student residences network

Your step by step
guide to **getting online**

ISS Information Systems Services

2008/09



Start Here

This leaflet will help you connect your computer to the Student Residences Network (ResNet).

Once connected, you will be guided step by step through the process of validating your computer on ResNet by a series of web pages.

You need...

- Computer with a network card (most computers have them).
- Blue network cable.



Desktop PC The network socket is near your keyboard, mouse & USB sockets (or on a silver expansion card).



Laptop Your network socket will be on the side or rear of your laptop.



Network Socket Symbol

Do this...

- 01** Plug the blue cable into the network socket on your computer.
- 02** Then plug the other end into the network point on the wall near your desk.
- 03** Switch on your computer.
- 04** Start your web browser e.g. Internet Explorer, Mozilla Firefox or Safari. You should now see the ResNet page below.

Vista Users If warned about 'Intranet Settings' - right click on the 'Information bar' and choose 'Enable Intranet Settings'.

Vista Users If asked which type of network to use - choose the 'Public' option.



- 05** Follow the instructions you find there to continue the ResNet validation process.

If you don't see the 'ResNet' page Follow the instructions for your system →

Windows XP

Configuring Your Connection

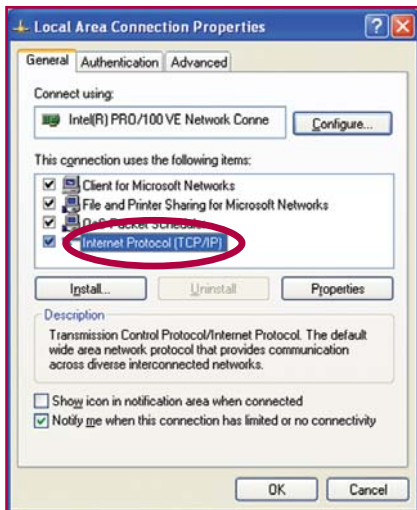
Only read this section if the 'Start Here' instructions don't work.

The next few instructions are to configure your connection for Windows XP Home Edition, Professional and Media Centre.

- 01** Click on the 'Start' button then the 'Control Panel' option - see 'Control Panel'.
- 02** Click 'Network & Internet Connections' option then 'Network Connections' option. *See below.*



- 03** Right click on the 'Local Area Connection' icon then click on 'Properties' option. *See below.*



- 04** Double click on the 'Internet Protocol (TCP/IP)' option.
- 05** Ensure that both the following are selected:
 - 'Obtain an IP address automatically'
 - 'Obtain DNS server address automatically'
- 06** Click 'OK', then 'OK' again and close the remaining dialog.

- 07 Start your web browser e.g. Internet Explorer or Mozilla Firefox. You should now see the ResNet page.
- 08 Follow the instructions you find there to continue the ResNet validation process.

Problems with your connection? *If you don't see the 'ResNet' page, check the steps above again.*

ResNet 'Bookable' Workshop *To book a ResNet workshop contact the ISS Service Desk Phone: 01524-5-10987 or email: iss-service-desk@lancaster.ac.uk. ResNet 'Bookable' workshops are run Monday to Friday between 9am and 5pm during term time.*

Vista

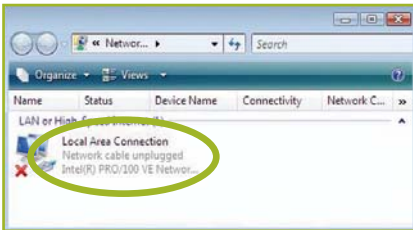
Configuring Your Connection

Only read this section if the 'Start Here' instructions don't work.

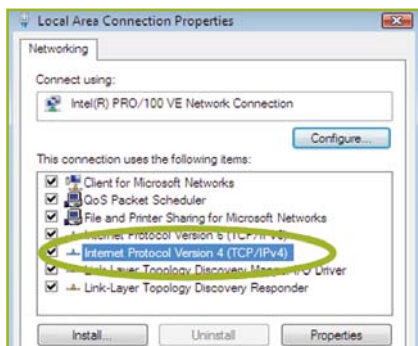
- 01 Click on the 'Start' button then the 'Control Panel' option - see 'Control Panel'.
- 02 Click on the 'Network and Internet' option then click on 'Network and Sharing Center' option. *See dialog below.*



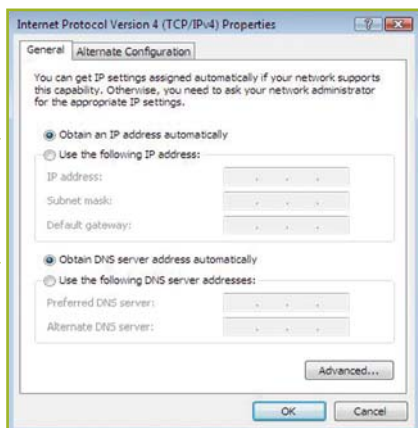
- 03 Click on 'Manage Network Connections' on the left hand bar.



- 04 Right click on the 'Local Area Connection' icon then click on the 'Properties' option.
- 05 Click on 'Continue' (if necessary, enter admin user name and password).



06 Double click on 'Internet Protocol Version 4 (TCP/IPv4)' option.



07 Ensure that both the following are selected:

- 'Obtain an IP address automatically'
- 'Obtain DNS server address automatically'

08 Click 'OK', then 'OK' again and close the remaining dialog.

09 Start your web browser e.g. Internet Explorer or Mozilla Firefox. You should now see the ResNet page.

10 Follow the instructions you find there to continue the ResNet validation process.

Problems with your connection? *If you don't see the 'ResNet' page, check the steps above again.*

ResNet 'Bookable' Workshop *To book a ResNet workshop contact the ISS Service Desk Phone: 01524-5-10987 or email: iss-service-desk@lancaster.ac.uk. ResNet 'Bookable' workshops are run Monday to Friday between 9am and 5pm during term time.*

Linux



This page gives basic information about how to configure a generic Linux system to work on ResNet. We do not give specific instructions because there are so many different versions of Linux that operate in subtly different ways. The instructions below are supplied for people who prefer to use Linux (in spite of the lack of support), and are NOT guaranteed.

Configuring Your Connection

- 01** Change the hostname to your Student Network ID i.e. STUDENTxxxxx e.g. STUDENT12345
- 02** Configure your network interface for DHCP and ensure that you have picked up a valid lease. The IP address that you should be assigned before validating should be of the 10.38.x.x format.
- 03** Configure your computer to use the University webcache wherever needed (e.g. your shell and web browser).
- 04** <http://wwwcache.lancs.ac.uk/> is the URL of the automatic proxy configuration script which should be used in browsers.
- 05** Your shell will most likely need the webcache manually specified as <http://wwwcache.lancs.ac.uk:8080> for http and ftp proxies before update tools such as apt and yum will work correctly.
- 06** Start your web browser e.g. Mozilla Firefox or Opera. You should now see the ResNet page.
- 07** Follow the instructions you find there to continue the ResNet validation process.

Problems with your connection? *If you don't see the 'ResNet' page, check the steps above again.*

ResNet 'Bookable' Workshop *To book a ResNet workshop contact the ISS Service Desk Phone: 01524-5-10987 or email: iss-service-desk@lancaster.ac.uk. ResNet 'Bookable' workshops are run Monday to Friday between 9am and 5pm during term time.*

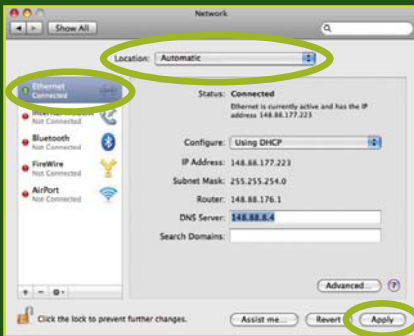
Mac OS X

Configuring Your Connection

01 Click on the 'Apple' menu then the 'System Preferences' option.

02 Under 'Internet and Network' click on the 'Network' icon.

See dialog below



03 Make sure that the 'Location' list is set to 'Automatic'.

04 Tiger (OS X 10.4) Make sure the 'Show' list is set to 'Ethernet' or 'Built in Ethernet'.

Leopard (OS X 10.5) Make sure that 'Ethernet' is highlighted on the sidebar.

05 Ensure that 'Configure' is set to 'Using DHCP'.

06 Click on the 'Apply' button.

07 Start your web browser e.g. Safari. You should now see the ResNet page.

08 Follow the instructions you find there to continue the ResNet validation process.

Problems with your connection? *If you don't see the 'ResNet' page, check the steps above again.*

ResNet 'Bookable' Workshop *To book a ResNet workshop contact the ISS Service Desk Phone: 01524-5-10987 or email: iss-service-desk@lancaster.ac.uk. ResNet 'Bookable' workshops are run Monday to Friday between 9am and 5pm during term time.*

LANCASTER
UNIVERSITY



If you have problems
reading this leaflet
a larger print version
is available in PDF
format at:

[www.lancs.ac.uk
/iss/resnet](http://www.lancs.ac.uk/iss/resnet)